



**OCEAN SAFETY SUPPLIES**

Spill Control & Containment Solution



## **SPILL CONTROL & CONTAINMENT SOLUTION**

<https://oceansafetysupplies.com>



# About Ocean Safety Supplies

## Your Trusted Partner in Environmental and Industrial Safety Solutions

Ocean Safety Supplies Pte Ltd is a Singapore-based stockist, manufacturer, and distributor of environmental and industrial safety products, including Spill Kits, Absorbents, Flammable Cabinets, Safety Showers, and more. With over 10,000 sq. ft. of warehousing and a strong regional distribution network, we offer fast, reliable supply across Southeast Asia. Expanding our offerings to include Oil Skimmers and Marine SOPEP, we aim to provide complete spill solutions. Our commitment is to deliver cost-effective, high-quality products, reduce delays and defects, and support our customers' growth. We help clients make informed decisions by supplying reliable solutions tailored to their specific operational needs.

## Why Choose Ocean Safety Supplies?

### Delivering Safety, Reliability, and Industry Expertise

#### Extensive Product Range :

From spill kits to flammable cabinets, we cover all your safety needs.



#### Industry Experience :

Over 15 years serving marine, industrial, and commercial sectors.

#### Fast & Reliable Delivery :

Stock-ready solutions with quick dispatch across Singapore and beyond.



#### Quality You Can Trust :

Tested, certified products that meet international safety standards.



## Contact Details



1 Bukit Batok Cres, #08-60 WCEGA Plaza Singapore 658064



+65 67470490



+65 90083897

info@oceansafety-supplies.com

hari@oceansafety-supplies.com





## Our Vision

To be a top-rated provider of Environmental Safety Solutions in the APAC region, known for excellence in service, structure, and operations. We aim for long-term success through customer satisfaction, driven by timely delivery, attention to detail, and a service-oriented approach. Offering a full range of products—from Spill Kits to Safety Showers—our knowledgeable team is dedicated to understanding client needs and delivering the right solutions, including equipment selection and training, to ensure personal and environmental safety.

## What Drives Us

**Guided by purpose, driven by quality and values**



### Our Mission

We aim to provide the highest quality services at fair and competitive prices, guided by hard work, integrity, and innovative technology to achieve excellence and customer satisfaction.



### Our Quality

Always operate safely and efficiently—avoid any conditions you feel are unsafe. Show honesty and integrity through your actions and hold others to the same high standards at all times.



### Our Core Values

Our values guide everything we do. We are deeply committed to safety and dedicated to delivering products that consistently meet the highest standards of quality and reliability.



# QUALITY POLICIES

**OUR COMPANY  
IS DEDICATED  
TO ACHIEVING  
ULTIMATE  
CUSTOMER  
SATISFACTION  
BY ENSURING:**

- 👉 The highest quality standards
- 👉 Timely delivery of goods

We are also committed to complying with all applicable and mandatory requirements while striving to achieve the operational goals and targets set forth by the organization's strategic direction. We foster an environment-friendly and healthy workplace, continuously improving in all areas of our operations and nurturing a strong spirit of teamwork.



# CONTENTS



**ABSORBENT PADS 7**



**SPILL KITS 15**



**SECONDARY CONTAINMENT  
PALLET 23**



**SPILL QUICK BERM 26**



**FLAMMABLE CABINET 28**



**ACID CORROSIVE CABINET 30**



**30 & 90 MIN EN CABINET 32**



**PPE STORAGE CABINET 39**



**EMERGENCY EYEWASH  
STATION 41**



**NATURAL SAW DUST 55**



**FLOOD SAX 56**



**HDPE JERRY CAN 59**



# CONTENTS



**SHARPS CONTAINER 60**



**ISO CONTAINERS 61**



**BIOHAZARD BAGS & BINS 62**



**EAGLE OVERPACK DRUM 66**



**PPE & CLEAN-UP EQUIPMENT 67**

## TO ORDER



1 Bukit Batok Cres, #08-60 WCEGA  
Plaza Singapore 658064



+65 67470490  
+65 90083897



info@oceansafety Supplies.com  
hari@oceansafety Supplies.com



www.oceansafety Supplies.com





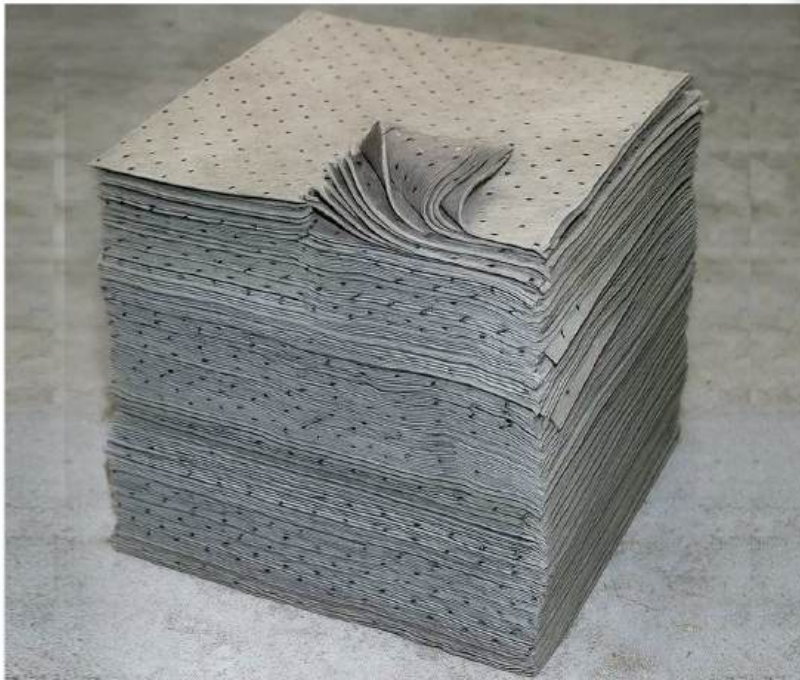
## ABSORBENT PADS

Absorbent pads rapidly soak up oil, chemical, or water-based spills. Durable and efficient, ideal for industrial, lab, or maintenance use to ensure cleaner, safer workspaces.

GENERAL PURPOSE ABSORBENT	7
HAZCHEM ABSORBENT	7
MARINE FLOATING BOOMS	2
OIL FUEL ABSORBENT	7



# GENERAL PURPOSE ABSORBENT



## GENERAL PURPOSE ABSORBENT PAD 200GSM

These reliable, 200gsm absorbent pads are designed for quick and efficient containment of oils, chemicals, and water. Ideal for industrial use, they offer versatile performance across various spill scenarios.

### KEY FEATURES:

- ✦ Efficient Absorption
- ✦ Versatility
- ✦ Balanced Weight
- ✦ Convenient Size
- ✦ Effective Containment
- ✦ Compliance Assurance

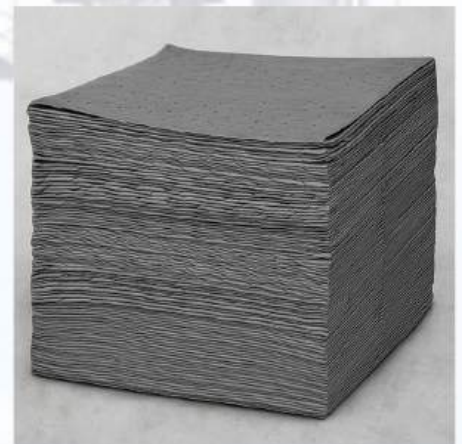
SKU: OSS-UP200

Capacity: 83 Litre / 100 piece

Weight: 4.2 kg

Dimensions: 40cm x 50cm

Thickness: 200gsm



## GENERAL PURPOSE ABSORBENT PAD 400GSM

Heavy-duty 400gsm absorbent pads offer superior, reliable liquid containment for industrial spills involving oils, chemicals, and water.

SKU: OSS-UP201

Capacity: 166 Liter / 100 piece

Weight: 8.2 kg

Dimensions: 40cm x 50cm



## GENERAL PURPOSE SOCKS 1.2M X 76CM

SKU: OSS-UB012

Capacity: 56ltr/ pack

Weight: 6.5kg

Dimensions: 1.2 x 76mm

Packing: 10pcs/pack



# GENERAL PURPOSE ABSORBENT



## GENERAL PURPOSE ABSORBENT SOCKS 3M X 76MM

A versatile and compliant spill control General Purpose socks 3Mx 76MM designed to enhance safety, simplify spill response, and meet regulations with ease.

---

SKU: OSS-UB012

---

Capacity: 56ltr/ pack

---

Weight: 6.5kg

---

Dimensions: 1.2 x 76mm

---

Packing: 10pcs/pack



## GENERAL PURPOSE ABSORBENT ROLL 50M X 500MM

Ensure quick and reliable spill control with this Absorbent Roll, designed for efficient absorption of oils, chemicals, and water in industrial settings.

---

SKU: OSS-UR011

---

Capacity: 70 Litre / Roll

---

Weight: 5 kg

---

Dimensions: 50m x 500mm

---

Packing: 1 Roll



## GENERAL PURPOSE ABSORBENT ROLL 50M X 1M

Achieve efficient industrial spill control with our 50m x 1m General Purpose Absorbent Roll, designed for fast, effective absorption of oils, chemicals, and water.

---

SKU: OSS-UR012

---

Capacity: 140- Litre / Roll

---

Weight: 10 kg

---

Dimensions: 50m x 1m

---

Packing: 1 Roll

## GENERAL PURPOSE ABSORBENT PILLOW 45CM X 45CM



Our 45cm x 45cm General Purpose Absorbent Pillow offers fast, versatile liquid containment, an essential, high-performance tool for industrial spill response.

---

SKU: OSS-GPL205

---

Capacity: 57ltr / 10 pcs

---

Weight: 6kg

---

Dimensions: 45cm x 45cm

---

Packing: 10pcs/pack



# HAZCHEM ABSORBENT



## HAZCHEM ABSORBENT PAD 200GSM

Introducing our 200gsm Hazchem Absorbent Pad designed for rapid, efficient containment of hazardous chemical spills. Its lightweight yet durable build ensures high absorption in labs, factories, and industrial settings.

Dimension	: 40cm x 50cm
Packing	: 100Pcs/Pack
Capacity	: 83Ltr/Pack
Weight	: 4.1kg
Compliant	: SPCC   EPA   WSH

## HAZCHEM ABSORBENT PAD 400GSM

Discover our 400gsm Hazchem absorbent pads a high performance solution for rapid, reliable hazardous chemical spill control.

Width	: 40cm
length	: 50cm
Packing	: 100pcs/Pack
Absorption	: 166Ltr/Pack
Weight	: 8.2kg
Compliant	: SPCC   EPA   WSH



## HAZCHEM SOCKS 3M X 76MM

Introducing our 3m x 76mm Hazchem Containment Socks designed for precise and efficient hazardous spill control. Built for industrial safety, they offer superior performance in containing and managing spills.

Dimension	: 3M X 76mm
Packing	: 10Pcs/Pack
Capacity	: 117Ltr/Pack
Weight	: 7kg
Compliant	: SPCC   EPA   WSH



# HAZCHEM ABSORBENT



## HAZCHEM SOCKS

1.2M X 76MM

Hazchem Socks 1.2m ensure fast, targeted hazardous spill control.

Dimension : 1.2M X 76mm

Packing : 10Pcs/Pack

Capacity : 67Ltr/Pack

Weight : 7kg

Compliant : SPCC | EPA | WSH



## HAZCHEM ABSORBENT ROLL 50M X 500MM

Hazchem Absorbent Roll ensures efficient, wide hazardous spill control.

Dimension : 50M X 500MM

Packing : 1 ROLL

Capacity : 75Ltr

Weight : 5kg

Compliant : SPCC | EPA | WSH



## HAZCHEM ABSORBENT ROLL 50M X 1M

Hazchem Absorbent Roll: efficient, versatile solution for hazardous spill control.

Dimension : 50M X 1M

Packing : 1 ROLL

Capacity : 150Ltr

Weight : 10kg

Compliant : SPCC | EPA | WSH

## HAZCHEM ABSORBENT PILLOW 45CM X 45CM



The 45x45cm Hazchem Absorbent Pillow delivers targeted control for hazardous spills.

It enhances workplace safety by quickly containing dangerous liquids.

Designed for efficiency, it simplifies cleanup in critical spill situations.

Dimension : 45cm x 45cm

Packing : 10Pcs/Pack

Capacity : 90Ltr

Toxicity | Odour : None

Fume Propagation

Weight : 6kg

Compliant : SPCC | EPA | WSH



# MARINE FLOATING BOOMS



## OIL SPILL ABSORBENT BOOM 3M X 20CM

Discover the power of our 3m x 20cm Oil Spill Absorbent Boom a durable, versatile barrier for rapid spill response.

Engineered for efficiency, it swiftly contains oils, fuels, and hydrocarbons, minimizing spread and environmental impact.

### KEY FEATURES:

- ★ Efficient Oil Containment
- ★ Adaptable to Different Water Environments
- ★ Versatile Size
- ★ Durable Construction
- ★ Quick Deployment
- ★ Compliance Assurance

Capacity: 512 Litre / 4pcs

Weight: 25.5kg

Dimensions: 3m x 20cm

Packing: 4pcs/pack



## OIL SPILL ABSORBENT BOOM 3M X 12.5CM

Introducing our 3m x 12.5cm Oil Spill Absorbent Boom a compact, high performance barrier designed to quickly contain oil, fuel, and hydrocarbon spills in water environments.

Capacity: 200 Litre / 4pcs

Weight: 10kg

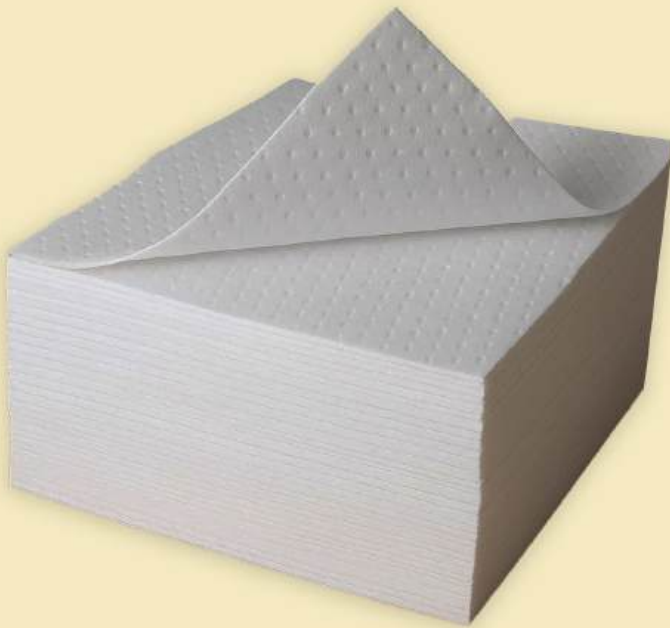
Dimensions: 3m x 12.5cm

Packing: 4pcs/pack





# OIL/FUEL ABSORBENT



## OIL ONLY ABSORBENT PADS 200GSM

Experience fast and effective oil spill control with our 200gsm Oil Only Absorbent Pads designed to absorb oils while repelling water for efficient cleanup in industrial settings.

### KEY FEATURES:

- ✚ Efficient Oil Absorption
- ✚ Adaptable to Different Environments
- ✚ Oil-Selective Technology
- ✚ Versatility
- ✚ Balanced Weight
- ✚ Convenient Size
- ✚ Robust Construction
- ✚ Effective Containment

SKU: OSS-OP200

Capacity: 83 Litre / 100 piece

Weight: 4.2 kg

Dimensions: 40 x 50cm

Packing: 100pcs/pack



## OIL ONLY ABSORBENT PADS 400GSM

Oil Only Absorbent Pads 400 gsm high performance pads engineered to swiftly absorb oils while repelling water.

SKU: OSS-OP201

Capacity: 166 Litre / 100 piece

Weight: 8.2 kg

Dimensions: 40 x 50cm

Packing: 100pcs/pack



## OIL SPILL ABSORBENT BOOM SOCKS 3M X 76CM

SKU: OSS-OB021

Capacity: 142 Litre / 10pcs

Weight: 15kg

Dimensions: 3m x 76mm

Packing: 10pcs/pack



# OIL/FUEL ABSORBENT



## **OIL FUEL SPILL ABSORBENT BOOM SOCKS 1.2M X 76CM**

Improve spill control with our 1.2m x 76cm Oil Fuel Containment Socks, engineered for fast, targeted containment of oil and fuel spills.

---

SKU: OSS-OB020

---

Capacity: 72 Litre / 10pcs

---

Weight: 6.5kg

---

Dimensions: 1.2m x 76mm

---

Packing: 10pcs/pack

---



## **OIL ONLY ABSORBENT ROLL 50M X 500MM**

Efficiently control oil spills with our 50m x 500mm Oil Only Absorbent Roll high-performance, water repellent, and ideal for industrial use.

---

SKU: OSS-OR211

---

Capacity: 72 Litre / roll

---

Weight: 5kg

---

Dimensions: 50m x 500mm

---

Packing: 1 roll

---



## **OIL ONLY ABSORBENT ROLL 50M X 1M**

Effectively contain oil spills with our 50m x 1m Oil Absorbing Roll, engineered for rapid absorption of oils and fuels while repelling water efficiently.

---

SKU: OSS-OR212

---

Capacity: 144 Litre / roll

---

Weight: 10kg

---

Dimensions: 50m x 1m

---

Packing: 1 roll

---

## **OIL SPILL CONTAINMENT PILLOW 45CM X 45CM**



Introducing our 45cm x 45cm Oil Spill Containment Pillow compact, efficient, and designed for rapid absorption of oils, fuels, and hydrocarbons.

---

SKU: OSS-OPL205

---

Capacity: 93 Litre / 10pcs

---

Weight: 6kg

---

Dimensions: 45cm x 45cm

---

Packing: 10pcs/pack

---





## SPILL KITS

Spill Kits ensure fast, safe cleanup of hazardous spills with absorbents and PPE, helping maintain safety and compliance in various environments.

CHEMICAL SPILL KIT	6
GENERAL PURPOSE SPILL KIT	6
MARINE SOPEP SPILL KIT	2
Oil/Fuel Spill Kit	6



# CHEMICAL SPILL KIT



## 20L PAIL SPILL KIT FOR CHEMICAL

OSS® Spill Kits provide fast, safe spill cleanup with quality sorbents and compliance.

---

HC Containment Socks (1.2m x 76mm) : 1 Pc

---

Hazchem Absorbent Pads 200gsm : 20 Pc

---

Biohazard Contaminated Waste Bags : 02 Pc

---

AntiFog Splash Proof Safety Goggles : 01 Pc

---

Chemical Resistant Gloves : 01 Pc

---

Disposable Coverall with Hood : 01 Pc

---

20ltr Heavy Duty Pail : 01 Unit

---

Spill Kit Instruction Sheet : 01 Pc



## 20L HAZCHEM | CHEMICAL SPILL KIT

20L Chemical Spill Kit enables quick, efficient response to small hazardous chemical spills.

---

Hazchem Absorbent Pads 200gsm : 20 Pcs

---

HC | Chemical Socks 1.2m x76mm : 02 Pcs

---

Chemical resistant gloves : 01 Pair

---

Hazardous Waste Bag / Ties : 02 Pcs

---

Disposable Coverall with Hood : 01 Pc

---

Antifog | Splash-Proof Safety Goggles : 1 Pc

---

20L Heavy Duty Nylon Zip Spill Kit Bag : 1 Pc

---

Spill Handling Instruction Sheet : 01 Pc

## 40L HAZCHEM | CHEMICAL SPILL KIT

Our 40L Chemical Spill Kit ensures fast, effective containment of hazardous spills in any workplace.

---

HC | Chemical Absorbent Pads 200gsm | 40cm x 50cm : 35 Pcs

---

HC | Chemical Socks 1.2mx76mm : 04 Pcs

---

Chemical resistant gloves : 01 Pair

---

Hazardous Waste Bag / Ties : 02 Pcs

---

Disposable coverall with hood : 01 Pc

---

Antifog | Splash-Proof Safety Goggles : 01 Pc

---

40L Heavy-duty nylon zip bag : 01 Pc

---

Spill Handling Instruction Sheet : 01 Pc





# CHEMICAL SPILL KIT



## 120L HAZCHEM | CHEMICAL SPILL KIT

120L Chemical Spill Kit ensures efficient, largescale hazardous spill control and safety.

HC | Chemical Absorbent Pads 200gsm | 40cm 50cm : 100 Pcs

HC | Chemical Socks 1.2m 76mm : 08 Pcs

Chemical resistant gloves : 02 Pair

Hazardous Waste Bag / Ties : 10 Pcs

Disposable coverall suit with hood : 02 Pair

Antifog | Splash Proof Safety Goggles : 01 Pcs

120L Heavy Duty Wheelie Spill Kit Bin : 01 Unit

Spill Handling Instruction Sheet : 01 Pcs



## 240L HAZCHEM | CHEMICAL SPILL KIT

200L Chemical Spill Kit provides swift, reliable response for large hazardous chemical spills.

HC | Chemical Absorbent Pads 200gsm  
| 40cm 50cm : 200 Pcs

HC | Chemical Socks 1.2mx76mm : 15 Pcs

Chemical resistant gloves : 02 Pair

Hazardous Waste Bag : 15 Pcs

Disposable coverall suit with hood : 02 Pair

Antifog | Splash-Proof Safety Goggles : 01

240L Heavy Duty Wheelie Spill Kit Bin : 01 Unit

Spill Handling Instruction Sheet : 01 Pc



## 360L (95G) HAZCHEM | CHEMICAL SPILL KIT

HC | Chemical Absorbent Pads 200gsm : 300

HC | Chemical Socks 1.2mx76mm : 20

HC | Containment Pillow 45cm x45cm : 05

Full Body Disposable Coverall Suit : 02

Spark Proof Green Shovel : 01

50l Saw Dust Granular : 01

Pair of Chemical resistant gloves : 04

Hazardous Waste Bag : 20

Antifog | Splash-Proof Safety Goggles : 02

95G Eagle Overpack Drum : 01

Spill Handling Instruction Sheet : 01



# GENERAL PURPOSE SPILL KIT



## 20L PAIL GENERAL PURPOSE SPILL KIT

OSS® Spill Kits offer quick, reliable cleanup with essential sorbents for any spill.

GP | Universal Absorbent Pads 200gsm : 20 Pcs

GP | Universal Socks 1.2mx76mm : 01 Pc

Oil resistant gloves : 01 Pair

Hazardous Waste Bag : 02 Pcs

disposable coverall with hood : 01 Pc

Antifog | Splash-Proof Safety Goggles : 01 Pc

20L HDPE Pail to house all above contents : 1 Pc

Spill Handling Instruction Sheet : 01 Pc



## 20L GENERAL PURPOSE SPILL KIT

GP | Universal Absorbent Pads 200gsm

| 40cm 50cm : 20 Pcs

GP | Universal Socks 1.2m 76mm : 02 Pcs

Oil resistant gloves : 01 Pair

Hazardous Waste Bag : 02 Pcs

disposable coverall with hood : 01 Pc

Antifog | Splash-Proof Safety Goggles : 01 Pc

20L Heavy Duty Nylon Spill Kit Bag

( Weatherproof ) : 01 Unit

Spill Handling Instruction Sheet : 01 Pc

## 40L GENERAL PURPOSE SPILL KIT

The 40L General Purpose Spill Kit ensures fast, effective cleanup of oil, chemical, and water-based spills in any setting.

GP | Universal Absorbent Pads 200gsm | 40cm 50cm : 35 Pcs

GP | Universal Socks 1.2m 76mm : 04 Pcs

Oil resistant gloves : 01 Pair

Hazardous Waste Bag : 02 Pcs

disposable coverall with hood : 01 Pc

Antifog | Splash-Proof Safety Goggles : 01 Pc

40L Heavy Duty Nylon Spill Kit Bag ( Weatherproof ) : 01 Unit

Spill Handling Instruction Sheet : 01 Pc





# GENERAL PURPOSE SPILL KIT



## 120L GENERAL PURPOSE SPILL KIT

120L Spill Kit handles oil, chemical, and liquid spills efficiently.

GP   Universal Absorbent Pads 200gsm
40cm 50cm : 100 Pcs
GP   Universal Socks 1.2mx76mm : 10 Pcs
Oil resistant gloves : 02 Pair
Hazardous Waste Bag : 10 Pcs
Disposable coverall with hood : 02 Pcs
Antifog   Splash-Proof Safety Goggles : 01 Pc
120L Heavy Duty Wheelie Spill Kit Bin
( Weatherproof ) : 01 Unit of
Spill Handling Instruction Sheet : 01 Pc



## 240L GENERAL PURPOSE SPILL KIT

200L Chemical Spill Kit provides swift, reliable response for large hazardous chemical spills.

GP   Universal Absorbent Pads 200gsm
40cm x 50cm : 200 Pcs
GP   Universal Socks 1.2mx76mm : 15 Pcs
Oil resistant gloves : 02 Pair
Hazardous Waste Bag / Ties : 15 Pcs
disposable coverall with hood : 02 Pcs
Antifog   Splash-Proof Safety Goggles : 01 Pc
240L Heavy Duty Wheelie Spill Kit Bin
( Weatherproof ) : 01 Unit
Spill Handling Instruction Sheet : 01 Pc



## 360L (95G) HAZCHEM | CHEMICAL SPILL KIT

HC   Chemical Absorbent Pads 200gsm : 300
HC   Chemical Socks 1.2m 76mm : 20
HC   Chemical Containment Pillow 45cm 45cm : 05
Full Body Disposable Coverall Suit : 02
Spark Proof Green Shovel : 01
50l Saw Dust Granular : 01
Pair of Chemical resistant gloves : 04
Hazardous Waste Bag : 20
Antifog   Splash-Proof Safety Goggles : 02
95G Eagle Overpack Drum to house all above contents : 01
Spill Handling Instruction Sheet : 01



# MARINE SOPEP SPILL KIT

## MARINE OIL SPILL KIT 7 BARREL 1100L

Oil/Fuel Absorbent Pads 200gsm  
| 40cm 50cm : 600

Oil Absorbent Marine Boom 125mm 3m : 06

Oil Absorbent Roll 50m x 500mm : 01

Oil Absorbent Pillows 45cm x 45cm : 16  
units x Disposable Overalls with hood : 02

Splash Proof | Anti-fog Safety Goggles : 03

Contaminated Bio Hazard Waste Bags : 15

Green Spark Proof Shovel : 01

50L Saw Dust Absorbent Granular : 01

HDPE Weather-proof Container 1000 L : 01

Spill Handling Instruction Sheet : 01



## MARINE OIL SPILL KIT 12 BARREL 1900L

Our 1900L Marine Oil Spill Kit ensures swift, effective containment of marine oil spills, minimizing environmental damage and ensuring regulatory compliance.

Oil/Fuel Absorbent Pads 200gsm | 40cm x 50cm : 900

Oil Absorbent Marine Boom 125mm 3m : 09

Oil Absorbent Roll 50m x 500mm : 02

Oil Absorbent Pillows 45cm x 45cm : 25

Disposable Overalls with hood : 02 units

Splash Proof | Anti-fog Safety Goggles : 03

Contaminated Bio Hazard Waste Bags : 18

Green Spark Proof Shovel : 02

50L Saw Dust Absorbent Granular : 02

HDPE Weather-proof Container 1400 Liter : 01

Spill Handling Instruction Sheet : 01





# OIL/FUEL SPILL KIT



## 20L PAIL SPILL KIT FOR OIL

Spills are inevitable—OSS® Oil Spill Kits provide fast, effective cleanup with high-quality, water repellent sorbents. Durable, customizable, and easy to access, they ensure safety and compliance in any spill emergency.

---

1.2m 76mm Oil/fuel Containment Socks : 1 Pc

---

Oil/fuel Absorbent Pads 200gsm : 20 Pcs

---

Biohazard Contaminated Waste Bags : 2 Pcs

---

Anti Fog Splash Proof Safety Goggles : 1 Pc

---

Oil Resistant Gloves : 2 pcs

---

Disposable coverall suit with hood : 1 Pc

---

20L n Heavy Duty Pail : 1 Pc

---

Spill Kit Instruction Sheet : 1 Pc



## 20L OIL/FUEL SPILL KIT

The 20L Oil-Only Spill Kit offers fast, efficient oil spill response, ensuring safety, compliance, and environmental protection.

---

Oil/Fuel Absorbent Pads 200gsm

---

| 40cm 50cm : 20 x Pcs

---

Oil/Fuel Socks 1.2mx76mm : 02 Pcs

---

oil resistant gloves : 01 Pair

---

Hazardous Waste Bag : 02 Pcs

---

Disposable coverall suit with hood : 01 Pcs

---

Antifog | Splash-Proof Safety Goggles : 01 Pc

---

20L Heavy-Duty Nylon Zip Spill Kit Bag to

---

house all above contents : 01 Unit

---

01 x Spill Handling Instruction Sheet



## 40L OIL/FUEL SPILL KIT

Our 40L Oil Only Spill Kit ensures efficient, reliable oil spill cleanup with enhanced capacity and regulatory compliance.

---

Oil/Fuel Absorbent Pads 200gsm | 40cm x 50cm : 35 Pc

---

Oil/Fuel Socks 1.2mx76mm : 04 Pc

---

oil resistant gloves : 01 Pair

---

Hazardous Waste Bag : 02 Pc

---

Disposable coverall suit with hood : 01 Pc

---

Antifog | Splash-Proof Safety Goggles : 01 Pc

---

40L Heavy-Duty Nylon Zip Spill Kit Bag : 01 Unit

---

Spill Handling Instruction Sheet : 01 Pc



# OIL/FUEL SPILL KIT



## 120L OIL/FUEL SPILL KIT

120L Oil Spill Kit ensures efficient, compliant cleanup in industrial oil spill situations.

Oil/Fuel Absorbent Pads 200gsm

| 40cm x 50cm : 100 Pcs

Oil/Fuel Socks 1.2mx76mm : 08 Pcs

oil resistant gloves : 02 Pair

Hazardous Waste Bag : 10 Pcs

Disposable coverall suit with hood : 02 Pair

Antifog | Splash-Proof Safety Goggles : 01 Pcs

120L Heavy-Duty Wheeled Spill kit Bin : 01 Unit

Spill Handling Instruction Sheet : 01 Pc



## 240L OIL/FUEL SPILL KIT

200L Oil-Only Spill Kit ensures efficient, compliant cleanup of large industrial oil spills.

Oil/Fuel Absorbent Pads 200gsm

| 40cm x 50cm : 200 Pcs

Oil/Fuel Socks 1.2mx76mm : 15 Pcs

oil resistant gloves : 02 Pair

Hazardous Waste Bag : 15 Pcs

Disposable coverall suit with hood : 02 Pair

Antifog | Splash-Proof Safety Goggles : 01 Pc

240L Heavy Duty Wheeled Spill kit : 01 Unit

Handling Instruction Sheet : 01 Spill



## 360L (95G) HAZCHEM | CHEMICAL SPILL KIT

HC | Chemical Absorbent Pads 200gsm : 300

HC | Chemical Socks 1.2mx76mm : 20

HC | Chemical Containment Pillow 45cm x45cm : 05

Full Body Disposable Coverall Suit : 02

Spark Proof Green Shovel : 01

50l Saw Dust Granular : 01

Pair of Chemical resistant gloves : 04

Hazardous Waste Bag : 20

Antifog | Splash-Proof Safety Goggles : 02

95G Eagle Overpack Drum to house all above contents : 01

Spill Handling Instruction Sheet : 01





## SECONDARY CONTAINMENT PALLETS

Secondary Containment Pallets are engineered to safely store drums and containers, capturing leaks, drips, and spills of hazardous liquids. Designed to meet environmental compliance standards, these durable pallets help prevent ground contamination and ensure workplace safety.



# SECONDARY CONTAINMENT PALLETS



## ROUND SPILL PALLET – 1 DRUM

No of Containers : 1 X 205l drum

External Dimension : 820 x 820 x 200 mm

Sump Capacity(L/US Gal) : 42L/11 US Gallons

Static Load (Kg) : 1100kg

UDL (Kg) : 500kg

G.W (Kg) : 5kg

Drain Plug : No



## 1 DRUM SPILL PALLET

No of Containers : 1 X 205L Drum

External Dimension : 720 x 720 x 155mm

Sump Capacity(L/US Gal) : 43L/11.6 US Gallon

Static Load (Kg) : 300kg

UDL (Kg) : 260kg

G.W (Kg) : 20kg

Drain Plug : No



## 2 DRUM SPILL PALLET- 2DSP

No of Containers : 2 X 205L Drum

External Dimension : 300 x 1300 x 680mm

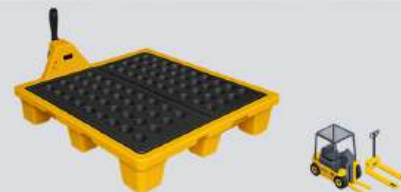
Sump Capacity : 150L/39.6 US Gallon

Static Load (Kg) : 910

UDL (Kg) : 260kg

G.W (Kg) : 20kg

Drain Plug : No



## 4 DRUM SPILL PALLET

No of Containers : 4 X 205L Drum

External Dimension : 300 x 1300 x 1300mm

Sump Capacity(L/US Gal) : 260L/96 US Gallon

Static Load (Kg) : 2600

Dynamic Load (Kg) : 1300

G.W (Kg) : 35

Drain Plug : Yes



## RAMP FOR SPILL PALLET

Standard : SPCC, EPA 40 CFR 264.175

Material : PE

Suitable for : Spill Pallet 2DSP and 4WDSP

Loading Weight : 1000kg

Dimension : 300mm H x 1200mm W x 800mm D

Net Weight : 38kg



# SECONDARY CONTAINMENT PALLETS



## SINGLE IBC SPILL PALLET

No of Containers : 1 X 1000L IBC Tank

External Dimension : 900 x 1350 x 1350mm

Sump Capacity : 1300L/343.4 US Gallon

Static Load (Kg) : 2600

UDL (Kg) : 1800

G.W (Kg) : 71

Drain Plug : Yes



## DOUBLE IBC SPILL PALLET

No of Containers : 2 X 1000L IBC Tank

External Dimension : 500 x 2200 x 1300

Sump Capacity : 1300L/343.4 US Gallon

Static Load (Kg) : 4000

Dynamic Load (Kg) : 2150

G.W (Kg) : 92.7

Drain Plug : Yes



## SINGLE IBC SPILL PALLET LOW PROFILE

No of Containers : 1 X 1000L IBC Tank

External Dimension : 747 x 1700 x 1600mm

Sump Capacity(L/US Gal) : 1300L/343.4 US Gallon

Static Load (Kg) : 3500

Dynamic Load (Kg) : 2000

G.W (Kg) : 65

Drain Plug : Yes



## POLY DRUM DOLLY WITH HANDLE

No of Containers : 1 X 205Ltr Drum

External Dimension : 1120 x 770 x 770mm

Static Load (Kg) : 430

Dynamic Load (Kg) : 310

G.W (Kg) : 15.5

SUMP (L) : 30



## DRUM DOLLY CDDH

No of Containers : 1 X 205Ltr Drum

External Dimension : 1120 x 770 x 770mm

Static Load (Kg) : 430

Dynamic Load (Kg) : 310

G.W (Kg) : 810

G.W (Kg) : 8





## **SPILL QUICK BERM**

Spill Quick Berm is a portable, easy-to-deploy containment solution designed to capture leaks, drips, and spills from vehicles, machinery, or containers. Made from durable, chemical-resistant materials, it provides instant secondary containment for hazardous liquids, helping meet environmental compliance and workplace safety standards. Ideal for emergency spill response and routine maintenance operations.



# SPILL QUICK BERM



## OIL CONTAINMENT BERM SB1000

The Oil Containment Berm SB1000 provides reliable spill protection for oil storage and regulatory compliance. Its durable, resilient construction ensures effective containment of spills, leaks, and drips. This helps minimize environmental impact and simplifies cleanup operations.

---

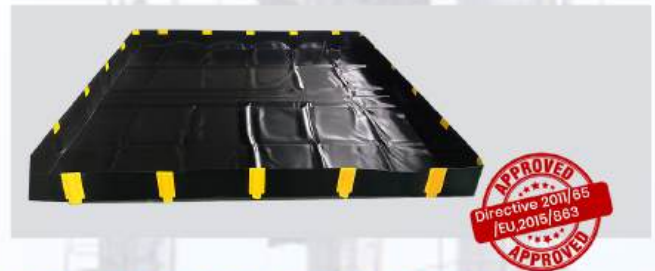
Capacity : 1000L

---

Packing Size (m) : 0.3 x 0.45 x 0.1 (h)

---

Weight (Kg) : 18kg



## OIL CONTAINMENT BERM SB2000

The Oil Containment Berm SB2000 ensures dependable spill protection and compliance with environmental regulations. Made from durable, resilient materials, it effectively contains oil spills, leaks, and drips. This reduces the risk of contamination, minimizes environmental harm, and streamlines cleanup.

---

Capacity : 2000L

---

Packing Size (m) : 0.3 x 0.56 x 0.1 (h)

---

Weight (Kg) : 27kg



## OIL CONTAINMENT BERM SB3000

The Oil Containment Berm SB3000 provides durable, compliant spill protection, minimizing contamination and simplifying cleanup.

---

Packing Size (m) : 0.3 x 0.62 x 0.15 (h)

---

Weight (Kg) : 37.2kg



## OIL CONTAINMENT BERM SB5000

The Oil Containment Berm SB5000 offers durable, compliant spill protection, preventing contamination and simplifying cleanup.

---

Packing Size (m) : 0.3 x 0.65 x 0.15 (h)

---

Weight (Kg) : 49.2kg



## OIL CONTAINMENT BERM SB10000

The Spill Containment Berm SB10000 offers durable, flexible containment for compliance and environmental safety.

---

Packing Size (m) : 0.5 x 0.95 x 0.20 (h)

---

Weight (Kg) : 71kg



# FLAMMABLE CABINET



## UNDERCOUNTER CABINET

Compact 4-gallon cabinet offers efficient, secure storage for flammable liquids, ideal for laboratories, workshops, and various workplace settings.



## FLAMMABLE CABINET 4 GALLON

Flammable Safety Storage Cabinet  
Single-Door, Manual-Close  
Bench-Top  
Supplied with 1 unit of shelf



## FLAMMABLE CABINET 12 GALLON

Store flammable liquids safely with our compact 12-gallon cabinet, ideal for efficient and secure workplace storage.



## FLAMMABLE CABINET 22 GALLON

Flammable Safety Storage Cabinet  
Single-Door, Tall Manual-Close  
Supplied with 3 unit of shelf



## FLAMMABLE CABINET 15 GALLON

Flammable Safety Storage Cabinet  
Single-Door, Manual-Close  
Bench-Top  
Supplied with 1 unit of shelf



## FLAMMABLE CABINET 30 GALLON

Store hazardous materials safely with our 30-gallon flammable cabinet durable, compliant, and versatile.

Flammable Safety Storage Cabinet  
Double-Door, Manual-Close  
Supplied with 2 unit of shelf



# FLAMMABLE CABINET



## FLAMMABLE CABINET 45 GALLON

Our 45-gallon flammable cabinet offers durable, compliant storage for hazardous materials with adjustable shelves and secure containment.

Flammable Safety Storage Cabinet

45 gallons

Double-Door, Manual-Close

Supplied with 2 unit of shelf

FM approved

FM  
approved



FM  
approved

## FLAMMABLE CABINET 54 GALLON

54-gallon cabinet for safe, compliant storage of flammable materials.

Flammable Safety  
Storage Cabinet

Tall Cabinet

Supplied with 3 unit of shelf

Single Door



FM  
approved

## FLAMMABLE CABINET 60 GALLON

60-gallon cabinet ensures safe, compliant storage of flammable materials.

Flammable Safety  
Storage Cabinet

Double-Door, Manual-Close

Supplied with 2 unit of shelf

FM approved



FM  
approved

## FLAMMABLE CABINET 90 GALLON

90-gallon flammable cabinet for safe, compliant hazardous material storage.

Double-Door, Manual-Close  
Supplied with 2 unit of shelf

FM approved | OSHA

| NFPA Compliant



# ACID CORROSIVE CABINET



## ACID CORROSIVE CABINET

Durable, corrosion resistant cabinet for safely storing hazardous acids and chemicals with secure locks and leak proof design.



## ACID/CORROSIVE-4 GALLON

Acid/Corrosive Safety Storage Cabinet  
Single-Door, Manual-Close  
Bench-Top  
Supplied with 1 unit of shelf



## ACID/CORROSIVE-12 GALLON

Acid/Corrosive Safety Storage Cabinet  
Single-Door, Manual-Close  
Bench-Top  
Supplied with 1 unit of shelf



## ACID/CORROSIVE-22 GALLON

22-gallon cabinet for safe, compliant storage of corrosive materials.

Acid/Corrosive Safety Storage Cabinet  
Single-Door, Manual-Close  
Bench-Top  
Supplied with 1 unit of shelf



## ACID/CORROSIVE-30 GALLON

30-gallon cabinet for safe, secure corrosive substance storage.

Acid/Corrosive Safety Storage Cabinet  
Single-Door, Manual-Close  
Supplied with 1 unit of shelf



## ACID/CORROSIVE-45 GALLON

Acid/Corrosive Safety Storage Cabinet  
Double-Door, Manual-Close  
Supplied with 2 unit of shelf



## ACID/CORROSIVE-54 GALLON

Single Door, Manual-Close  
Tall Cabinet  
Supplied with 3 unit of shelf, Poly tray  
FM approved | NFPA Compliant | OSHA



# ACID CORROSIVE CABINET



## ACID/CORROSIVE- 60 GALLON

60-gallon cabinet for safe, durable storage of corrosive substances.

Acid/Corrosive Safety Storage Cabinet  
Double Door, Manual-Close  
Tall Cabinet  
Supplied with 2 unit of shelf



## ACID/CORROSIVE- 90 GALLON

90-gallon cabinet for safe, durable storage of corrosive substances.

Acid/Corrosive Safety Storage Cabinet  
Double Door, Manual-Close  
Tall Cabinet  
Supplied with 2 unit of shelf





## 30 & 90 MIN EN CABINET

30 & 90 Minute EN cabinets offer fire rated, compliant storage for hazardous substances, ensuring safety with durable construction and fire-resistant design.

30-Min EN CABINET	4
30-Min FOR GAS CYLINDER CABINET	4
90-Min EN CABINET	7
90-Min Underbench Storage Cabinet	8
Australian Dangerous Goods Cabinets	11



## 30-MIN EN CABINET



### TYPE 30 MINUTES CABINET FLAB3120S

Numbers of shelf : 2 pcs

Number of Doors : 2

Door Type : Wing Door

Dimensions, Exterior : 1200x615x1400

Dimensions, Interior : 1090x490x1050

Extraction air : 75 DN

Minimum exhaust air quantity 10 times : 6 m<sup>3</sup>/h

Net Weight, kg : 300 kgs



### TYPE 30 MINUTES CABINET FLAB3060

Numbers of shelf : 3 pcs

Number of Doors : 1

Door Type : Wing Door

Dimensions, Exterior : 600x615x1950

Dimensions, Interior : 490x490x1600

Extraction air : 75 DN

Minimum exhaust air quantity 10 times : 6 m<sup>3</sup>/h

Net Weight, kg : 360 kgs



### TYPE 30 MINUTES CABINET FLAB3090

Numbers of shelf : 3 pcs

Number of Doors : 1

Door Type : Wing Door

Dimensions, Exterior : 1, 900x615x1950

Dimensions, Interior : 790x490x1600

Extraction air : 75 DN

Minimum exhaust air quantity 10 times : 6 m<sup>3</sup>/h

Net Weight, kg : 400 kgs



### TYPE 30 MINUTES CABINET FLAB3060

Numbers of shelf : 3 pcs

Number of Doors : 2

Door Type : Wing Door

Dimensions, Exterior : 1200x615x1950

Dimensions, Interior : 1090x490x1600

Extraction air : 75 DN

Minimum exhaust air quantity 10 times : 6 m<sup>3</sup>/h

Net Weight, kg : 600 kgs



# 30-MIN FOR GAS CYLINDER CABINET



## TYPE 30 MINUTES CABINET 2 GAS CYLINDERS GCC30102

50 Litre Gas Cylinders : 2 pcs

Number of Doors : 2

Door Type : Manual Door

Dimensions, Exterior : 600x615x2050

Dimensions, Interior : 490x430x1700

Extraction air : 75 DN

Minimum exhaust air quantity 10 times : 4 m<sup>3</sup>/h

Net Weight, kg : 420 kgs



## TYPE 30 MINUTES CABINET 3 GAS CYLINDERS GCC30103

50 Litre Gas Cylinders : 3 pcs

Number of Doors : 2

Door Type : Manual Door

Dimensions, Exterior : 900x615x2050

Dimensions, Interior : 790x430x1700

Extraction air : 75 DN

Minimum exhaust air quantity 10 times : 4 m<sup>3</sup>/h

Net Weight, kg : 520 kgs



## TYPE 30 MINUTES CABINET 4 GAS CYLINDERS GCC30104R

50 Litre Gas Cylinders : 4 pcs

Number of Doors : 2

Door Type : Manual Door

Dimensions, Exterior : 1200x615x2050

Dimensions, Interior : 1090x430x1700

Extraction air : 75 DN

Minimum exhaust air quantity 10 times : 4 m<sup>3</sup>/h

Net Weight, kg : 620 kgs



## TYPE 30 MINUTES CABINET 4 GAS CYLINDERS GCC30104

50 Litre Gas Cylinders : 4 pcs

Number of Doors : 2

Door Type : Manual Door

Dimensions, Exterior : 1400x615x2050

Dimensions, Interior : 1290x430x1700

Extraction air : 75 DN

Minimum exhaust air quantity 10 times : 4 m<sup>3</sup>/h

Net Weight, kg : 700 kgs



# 90-MIN EN CABINET



**TYPE 90 MINUTES  
COMBINATION CABINET**  
CLAB9120

Numbers of shelf : 7 pcs
Number of Doors : 3
Door Type : Wing Door
Dimensions,Exterior:1,1200x615x1950
Dimensions,Interior:1090x490x1600
Extraction air : 75 DN
Minimum exhaust air quantity 10 times : 6 m³/h
Net Weight, kg : 530 kgs



**MULTI-RISK TYPE 90  
MINUTES CABINET**  
FLAB9082V

Numbers of shelf : 4 pcs
Number of Doors : 2
Door Type : Vertical Door
Dimensions,Exterior: 820x865x1970
Dimensions,Interior: 710x750x1640
Extraction air : 75 DN
Minimum exhaust air quantity 10 times : 6 m³/h
Net Weight, kg : 800 kgs



**MULTI-RISK TYPE 90  
MINUTES CABINET**  
FLAB9045V

Numbers of shelf : 3 pcs
Number of Doors : 1
Door Type : Vertical Door
Dimensions,Exterior: 450x865x1970
Dimensions,Interior: 340x750x1640
Extraction air : 75 DN
Minimum exhaust air quantity 10 times : 6 m³/h
Net Weight, kg : 600 kgs



**TYPE 90 MINUTES  
CABINET** FLAB9060S

Numbers of shelf : 2 pcs
Number of Doors : 2
Door Type : Wing Door
Exterior : 600x615x1400
Interior : 490x490x1050
Extraction air : 75 DN
Min exhaust air quantity 10 times : 6 m³/h
Net Weight, kg : 290 kgs



**TYPE 90 MINUTES  
CABINET** FLAB9120S

Numbers of shelf : 2 pcs
Number of Doors : 2
Door Type : Wing Door
Exterior : 1200x615x1400
Interior : 1090x490x1050
Extraction air : 75 DN
Minimum exhaust air quantity 10 times : 6 m³/h
Net Weight, kg : 320 kgs



**TYPE 90 MINUTES  
CABINET** FLAB9060

Numbers of shelf : 3 pcs
Number of Doors : 1
Door Type : Wing Door
Exterior : 600x615x1950
Interior : 490x490x1600
Extraction air : 75 DN
Minimum exhaust air quantity 10 times : 6 m³/h
Net Weight, kg : 360 kgs



**TYPE 90 MINUTES  
CABINET** FLAB9120

Numbers of shelf : 3 pcs
Number of Doors : 2
Door Type : Wing Door
Exterior : 1200x615x1950
Interior : 1090x490x1600
Extraction air : 75 DN
Minimum exhaust air quantity 10 times : 6 m³/h
Net Weight, kg : 600 kgs



# 90-MIN UNDERBENCH STORAGE CABINET



## TYPE 90 MINUTES UNDERBENCH STORAGE CABINET FUB90060

EN14470-1 cabinet with 30/  
90-min fire resistance.



## TYPE 90 MINUTES UNDERBENCH STORAGE CABINET FUB90060T

Number of Doors : 1

Door Type : Drawer Door

Exterior : 600x535x600

Interior : 425x490x410

Extraction air : 75 DN

Minimum exhaust air  
quantity 10 times : 6 m³/h

Net Weight, kg : 200 kgs



## TYPE 90 MINUTES UNDERBENCH STORAGE CABINET FUB90089

Number of Doors : 2

Door Type : Wing Door

Exterior : 890x535x600

Interior : 780x410x425

Net Weight, kg : 280 kgs



## TYPE 90 MINUTES UNDERBENCH STORAGE CABINET FUB90089T

Number of Doors : 1

Door Type : Wing Door

Exterior : 890x535x600

Interior : 780x410x425

Net Weight, kg : 280 kgs



## TYPE 90 MINUTES UNDERBENCH STORAGE CABINET FUB90140

Number of Doors : 3

Door Type : Wing Door

Exterior : 1400x535x600

Interior : 1290x410x424

Net Weight, kg : 380 kgs



## TYPE 90 MINUTES UNDERBENCH STORAGE CABINET FUB90110

EN14470-1 flammable  
cabinet, 30/90 min fire  
resistant storage.

Number of Doors : 2

Door Type : Wing Door

Exterior : 1100x535x600

Interior : 990x410x425

Net Weight, kg : 330 kgs



## TYPE 90 MINUTES UNDERBENCH STORAGE CABINET FUB90110T

EN14470-1 flammable  
cabinet with advanced  
fire safety.

Number of Doors : 1

Door Type : Drawer Door

Exterior : 1100x535x600

Interior : 990x410x425

Net Weight, kg : 330 kgs

## TYPE 90 MINUTES UNDERBENCH STORAGE CABINET FUB90060T

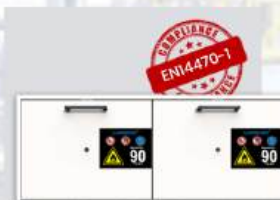
Number of Doors : 1

Door Type : Drawer Door

Exterior : 1100x535x600

Interior : 990x410x425

Net Weight, kg : 330 kgs





# AUSTRALIAN DANGEROUS GOODS CABINETS



## AEROSOL STORAGE CAGE. 2 STORAGE LEVEL UP TO 200 CANS

Yellow powder-coated steel cage with mesh sides, lockable doors, shelf, and safety signage.

Capacity: Up to 200 cans

Height (mm): 990

Width (mm): 780

Depth (mm): 760

Finish: Powder Coated Steel

Doors: 1

Storage Levels: 2



## FORKLIFT STORAGE CAGE.

Capacity: 4 x Forklift Cylinders

Height (mm): 990

Width (mm): 780

Depth (mm): 760

Door Catch: Magnetic

Storage Levels: 1



## FORKLIFT STORAGE CAGE.

Capacity: Up to 400 cans

Height (mm): 1920

Width (mm): 780

Depth (mm): 760

Door Catch: Magnetic

Storage Levels: 4



## FORKLIFT STORAGE CAGE.

Capacity: 8 x Forklift Cylinders

Height (mm): 1920

Width (mm): 780

Depth (mm): 760

Door Catch: Magnetic

Storage Levels: 2



## FORKLIFT & GAS CYLINDER STORAGE CAGE.

Yellow steel cage, lockable, two-level storage, restraining chain, forklift movable (empty).

Capacity: 8 x Forklift Cylinders & 9 x G Sized Gas Cylinders

Height (mm): 1920

Width (mm): 780

Doors: 2

Storage Levels: 3



# AUSTRALIAN DANGEROUS GOODS CABINETS



## GAS CYLINDER STORAGE CAGE

Yellow steel cage, lockable, forklift movable, restraint.

Capacity: 9 x G Sized Cylinders

Height (mm): 1920

Width (mm): 780

Depth (mm): 760

Finish: Powder Coated Steel

Doors: 1

Storage Levels: 1



## AEROSOL STORAGE CAGE

Yellow steel cage, lockable, forklift movable, shelving.

Capacity: Up to 800 cans

Height (mm): 1920

Width (mm): 1520

Depth (mm): 760

Finish: Powder Coated Steel

Doors: 2

Storage Levels: 8



## FORKLIFT STORAGE CAGE

Yellow steel cage, lockable, forklift movable, two-level.

Capacity: 16 x Forklift Cylinders

Height (mm): 1920

Width (mm): 1520

Depth (mm): 760

Doors: 2

Door Catch: Magnetic

Storage Levels: 4



## GAS CYLINDER STORAGE CAGE

Capacity: 18 x G Sized Gas Cylinders

Height (mm): 1920

Width (mm): 1520

Depth (mm): 760

Doors: 2

Storage Levels: 2



## AEROSOL STORAGE CAGE

Capacity: Up to 42 cans

Height (mm): 360

Width (mm): 560

Depth (mm): 490

Finish: Powder Coated Steel

Doors: 1

Storage Levels: 1



## AEROSOL STORAGE CAGE

Capacity: Up to 84 cans

Height (mm): 660

Width (mm): 560

Depth (mm): 490

Finish: Powder Coated Steel

Doors: 1

Storage Levels: 2



# PPE STORAGE CABINET

## SAFETY STATION EMERGENCY EQUIPMENT STORE AND SHOWER USE

The LABNORI Laboratory Emergency Safety Station features a secure cabinet for fire blankets, first aid kits, protective gear, and gas masks, along with a washing area with shower and eyewash. An automatic light ensures visibility during outages, enabling quick, effective access to emergency equipment.



### EMERGENCY PPE STORAGE CABINETS

Durable, acid-resistant steel cabinet for organized storage of all workplace protective gear, including eye, head, foot, clothing, respiratory, and fall protection.



### EMERGENCY PPE STORAGE CABINETS SPPC905

Durable, corrosion-resistant steel cabinet for organized storage of PPE, including eye, face, head, foot, hand, respiratory, hearing, knee, elbow, and fall protection, ensuring accessibility and workplace safety compliance.



### EMERGENCY PPE STORAGE CABINETS SPPC904W

Door Type : Manual

Material : Gavanized Steel

Dimensions, Exterior: 90\*46\*180cm



### EMERGENCY PPE STORAGE CABINETS SPPC904

Durable, corrosion-resistant steel cabinet for organized storage of PPE, including eye, face, head, foot, hand, respiratory, hearing, knee, elbow, and fall protection, ensuring accessibility and compliance with safety standards.

Door Type : Manual

Material : Gavanized Steel

Dimensions, Exterior: 90\*46\*180cm



# PPE STORAGE CABINET



## EMERGENCY PPE STORAGE CABINETS SPCC903W

Durable, corrosion-resistant steel PPE storage cabinet suitable for medical, laboratory, and industrial environments. Provides ample, organized space for storing eye, face, head, foot, clothing, gloves, knee, elbow, respiratory, and hearing protection. Ensures quick accessibility, enhances workplace safety, and supports compliance with OSHA standards, helping employers maintain a safe and healthful work environment for employees.



## EMERGENCY PPE STORAGE CABINETS SPCC903

Door Type : Manual

Material : Gavanized Steel

Dimensions, Exterior: 60\*46\*180cm



## EMERGENCY PPE STORAGE CABINETS SPCC901W

Durable steel cabinet for storing PPE, including eye, face, head, foot, clothing, respiratory, hearing, and fall protection.



## EMERGENCY PPE STORAGE CABINETS SPCC903

Door Type : Manual

Material: Gavanized Steel

Exterior : 90\*46\*120cm



## EMERGENCY PPE STORAGE CABINETS SPCC900W

Durable steel cabinet for storing PPE, including eye, face, head, foot, clothing, respiratory, and hearing protection.

## EMERGENCY PPE STORAGE CABINETS SPCC900

Door Type : Manual

Material: Gavanized Steel

Exterior : 60\*46\*120cm







## EMERGENCY EYEWASH STATION

Emergency Eyewash Station A safety device that quickly flushes the eyes to remove harmful chemicals, dust, or debris. Designed for fast activation, continuous water flow, and compliance with workplace safety standards.

Emergency Shower & Eyewash Station	10
Wall Mount Eyewash Stations	6
PEDESTAL MOUNTED EYEWASH	4
PORTABLE EYEWASH STATION	9
PRIVACY CURTAIN BOOTH SHOWER	2
EMERGENCY SHOWER ROOM	1
Tank – Fed Emergency Eyewash & Shower Cabin	3
DECK MOUNTED HOSE	4
DECK MOUNTED EYEWASH	6
FACUET-MOUNTED EYEWASH	2
SHOWER TEST KIT	1



# EMERGENCY SHOWER & EYEWASH STATION



## SAFETY SHOWER AND EYEWASH STATION

A safety shower and eyewash station delivers immediate flushing of hazardous substances from eyes and body, minimizing injury risks and ensuring workplace safety in laboratories, factories, and industrial environments.



## PORTABLE SHOWER AND EYEWASH STATION

A portable shower and eyewash station offers on site emergency decontamination, enabling quick flushing of harmful substances from eyes and body, ideal for remote locations or areas lacking fixed safety equipment.



## CURTAIN BOOTH SHOWER

A curtain booth shower is an enclosed emergency safety unit designed to provide immediate decontamination while ensuring user privacy. It features surrounding curtains and a high volume water flow to effectively remove hazardous chemicals, toxic substances, or debris from the body. Commonly used in laboratories, manufacturing plants, and chemical industries, it minimizes injury risks, meets safety standards, and contains water spray, helping maintain a clean, dry, and safe surrounding work environment during emergencies.



# EMERGENCY SHOWER & EYEWASH STATION



## EMERGENCY SHOWER & EYEWASH STATION SS-S350

TYPE : Combination | Stainless Steel 304 High Configuration Model with Safety Strips.

EYEWASH FLOW RATE :

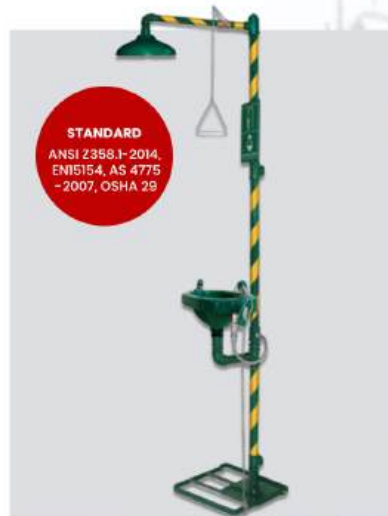
≥11.4L/min with self close and open bowl

SHOWER FLOW RATE : ≥75.7L/min

INLET /OUTLET SIZE : 1-1/4"

MIN AMBIENT TEMP : 5°C/41°F

MAX AMBIENT TEMP : 35°C/95°F



## GALVANIZED EMERGENCY SHOWER & EYEWASH STATION S250

Galvanized S250 Durable, dual function, ANSI/OSHA-compliant emergency safety unit.

TYPE : Galvanized powder coated mild steel with 150lb medium wall tubulars and fittings

EYEWASH FLOW RATE : ≥11.4L/min

SHOWER FLOW RATE : ≥75.7L/min

INLET /OUTLET SIZE : 1-1/4"

MIN AMBIENT TEMP : 5°C/41°F

MAX AMBIENT TEMP : 35°C/95°F



## SELF DRAINING SHOWER & EYEWASH STATION SS-F150

SS-F150 Self-Draining Shower & Eyewash Durable, dual function, ANSI/OSHA compliant unit for quick, reliable workplace emergency response.

TYPE : Self Draining | Anti Freeze

EYEWASH FLOW RATE : ≥11.4L/min

SHOWER FLOW RATE : ≥75.7L/min

WATER SUPPLY & OUTLET :

1" IPS / NPT

MIN AMBIENT TEMP : 5°C/41°F

MAX AMBIENT TEMP : 35°C/131°F



## EMERGENCY SHOWER & EYEWASH STATION SS-S250

TYPE : Combination | Stainless Steel 304 Emergency Safety Shower & Eyewash

EYEWASH FLOW RATE : ≥11.4L/min

SHOWER FLOW RATE : ≥75.7L/min

INLET /OUTLET SIZE : 1-1/4"

MIN AMBIENT TEMP : 5°C/41°F

MAX AMBIENT TEMP : 35°C/95°F





# EMERGENCY SHOWER & EYEWASH STATION



**STANDARD**  
ANSI Z358.1-2014,  
EN15154, AS 4775  
~2007, OSHA 29



**STANDARD**  
ANSI Z358.1-2014,  
EN15154, AS 4775  
~2007, OSHA 29



**STANDARD**  
ANSI Z358.1-2014,  
EN15154, AS 4775  
~2007, OSHA 29

## EMERGENCY SHOWER AND EYEWASH STATION SS-S100

Rapid decontamination,  
reducing chemical damage  
before medical assistance.

TYPE : Combination | Stainless  
Steel 304 Emergency Safety  
Shower & Eyewash

EYEWASH FLOW RATE :  $\geq 11.4\text{L/min}$

SHOWER FLOW RATE :  $\geq 75.7\text{L/min}$

INLET /OUTLET SIZE : 1-1/4"

MIN AMBIENT TEMP : 5°C/41°F

MAX AMBIENT TEMP : 35°C/95°F

## EPOXY COATING EMERGENCY SHOWER EYEWASH STATION S350

Emergency showers and  
eyewashes provide rapid  
decontamination.

TYPE : Combination | Stainless  
Steel 304 with Epoxy Coating

EYEWASH FLOW RATE :  $\geq 11.4\text{L/min}$

SHOWER FLOW RATE :  $\geq 75.7\text{L/min}$

INLET /OUTLET SIZE : 1-1/4"

MIN AMBIENT TEMP : 5°C/41°F

MAX AMBIENT TEMP : 35°C/95°F

## GALVANIZED STEEL EMERGENCY SHOWER & EYEWASH S-200

SS-F150 Self-Draining Shower &  
Eyewash Durable, dual function,  
ANSI/OSHA compliant unit for

TYPE : SGalvanized Steel  
Emergency Shower & Eyewash

EYEWASH FLOW RATE :  $\geq 11.4\text{L/min}$

SHOWER FLOW RATE :  $\geq 75.7\text{L/min}$

WATER SUPPLY & OUTLET :

1" IPS / NPT

MIN AMBIENT TEMP : 5°C/41°F

MAX AMBIENT TEMP : 35°C/131°F



# WALL MOUNT EYEWASH STATIONS



## STAINLESS STEEL WALL MOUNT EMERGENCY EYEWASH STATION

Eyewash Bowl: 304 Epoxy Coating  
Valve: 1/2" stainless steel 304 wall v.  
Water supply: 1/2" & Waste outlet: 1-1/4" IPS/NPT.  
Water working pressure: 0.2MPA -0.8MPA.  
Flow control: 12L/Min.  
Original water: Clean water or leached water.  
Activation: Eye washer is activated by flag push handle.  
Package: Carton size: 52X29X26CM



## STAINLESS STEEL WALL MOUNT EMERGENCY EYEWASH STATION

Eyewash Bowl & Cover: 304.  
Valve: Eye washer valve is making of 1/2" stainless steel 304 ball valve.  
Water supply: 1/2" & Waste outlet: 1-1/4" IPS/NPT.  
Flow control: 12L/Min.  
Original water: Clean water or leached water.  
Activation: Eye washer is activated by flag push handle.  
Package: Carton size: 52X29X26CM



## GALVANIZED WALL MOUNTED EMERGENCY EYEWASH B150

Piping Material: Galvanized Steel.  
Eyewash Bowl: ABS in Safety green color.  
Eyewash Head: Two Sprayers with dust cover.  
Eyewash Valve: 1/2" corrosion-resistant brass ball valve.  
Eyewash Activation: By push handle.  
Water Supply: 1/2" IPS Outlet: 1-1/4" IPS.  
Flow Control: 12L/Min.  
Water Working Pressure: 0.2-0.6MPA



## GALVANIZED WALL MOUNTED EMERGENCY EYEWASH B200

Piping Material: Galvanized Steel.  
Eyewash Bowl: ABS in Safety  
Eyewash Head: Two Sprayers with dust cover.  
Eyewash Valve: 1/2" corrosion-resistant brass ball valve.  
Activation: By push handle.



## STAINLESS STEEL WALL MOUNTED EYEWASHES SS-B100

Standard: ANSI Z358.1-2014, OSHA 29, EN15154, AS4775-2007  
Material: Stainless Steel 304  
Flow Rate: ≥11.4L/min  
Flusing Time: ≥15 min  
Inlet size: 1/2"  
Min Opr Pressure: 2 bar g, 29 PSI  
Maxi Ops Pressure: 6 bar g, 87 PSI  
Min Ambient Temp: 5°C/41°F  
Max Ambient Temp: 35°C/95°F



## GALVANIZED WALL MOUNTED EMERGENCY EYEWASH B100

Piping Material: Galvanized Steel.  
Eyewash Bowl: ABS in Safety  
Eyewash Head: Two Sprayers with dust cover.  
Eyewash Valve: 1/2" corrosion-resistant brass ball valve.  
Eyewash Activ.: By push handle.  
Water Supply: 1/2" IPS Outlet: 1-1/4" IPS.  
Flow Control: 12L/Min.  
Water Working Pressure: 0.2-0.6MPA



# STAINLESS STEEL PEDESTAL EYEWASH



## STAINLESS STEEL PEDESTAL EMERGENCY EYEWASH STATION

Pipe Material: Stainless Steel 304.

Eye washer valve: 1/2" stainless steel 304 ball valve.

Water supply: 1/2" & outlet: 1-1/4" IPS/NPT.

Water working pressure: 0.2MPA-0.8MPA

Flow control: 12L/Min

Original water: Clean water or leached water

Activation: Eye washer is activated by flag handle or foot treadle.

Package: Carton size: 73X28X25CM



## STAINLESS STEEL PEDESTAL EMERGENCY EYEWASH STATION

Pipe Material: Stainless Steel 304.

Eyewash Bowl & Cover: Stainless steel 304

Eye washer valve: 1/2" stainless steel 304 ball valve.

Water supply: 1/2" & outlet: 1-1/4" IPS/NPT.

Water working pressure: 0.2MPA-0.8MPA.

Flow control: 12L/Min.

Original water: Clean water or leached water.

Activation: Eye washer is activated by push plate or foot treadle.

Package: Carton size: 73X28X25CM



## PEDESTAL MOUNTED EYEWASH GALVANIZED E150

E150 Pedestal Eyewash ensures instant first aid flushing against chemical exposures.

Piping Material: Galvanized Steel.

Eyewash Bowl: ABS in safety green color.

Eyewash Head: Twin Sprayers, dust cover.

Eyewash Valve: 1/2" chrome plated brass ball valve.

Eyewash Activation: By push handle or foot pedal.

Water Supply: 1/2" IPS Outlet: 1-1/4" IPS.



# PORTABLE EYEWASH STATION



## DUAL MOUNTED EYEWASH STATION WMEES500

Size: 50 x 35 x 10cm

Material : ABS Plastic

Colour : Colour

Application : First Aid

Eyewash Bottle : 2 x Sterowash

Eyewash Solution 500ml



## MOBILE SELF-CONTAINED EYE WASH-D100

MOQ: 1 Set

Material & Fittings: Stainless Steel 304 with safety strips

Tank Capacity: 60L

Water Capacity: 40 (Work Time 15 Min accoring to ANSI Z358.1-2014)

Flow Control : 2.6L/Min

Activation by: Hand Push Plate

Standard/Certification: ANSI Z 358.1-2014, EN15154.1/2:2006

Warranty: 3Y for MFG defects

Packing Method: 60 x 60 x 90cm

Gross Weight: 13kg



## MOBILE SELF-CONTAINED EYE WASH -D150

MOQ: 1 Set

Material & Fittings: Stainless Steel 304 with safety strips

Tank Capacity: 114L

Water Capacity: 80L (WT 15 Min accoring to ANSI Z358.1-2014)

Flow Control 2.6L/Min

Activation by: Hand Push Plate

Water Inlet & Outlet : 1/2"IPS/NPT

Water working pressure: 0.3MPA-0.55MPA

Flow Rate Shower: 50L/Min

Flow Rate Eeyewash: 12L/Min

Standard/Certification: ANSI Z 358.1-2014, EN15154.1/2:2006

Warranty: 3 Years for manufacturer defects

Packing Method: 60 x 60 x 120cm

Gross Weight: 46kg



## PORTABLE GRAVITY FED EYEWASH T150

Type : Portable

Standard: ANSI Z358.1-2014, OSHA 29, EN 15154, AS4775-2007

Capacity : 16Gal/60L

Material: Non Toxic, High Density PE

Flushing time : ≥ 15 minutes



## PORTABLE GRAVITY FED EYEWASH T100

Type : Portable

Standard : ANSI Z358.1-2014, OSHA 29, EN 15154, AS4775-2007

Capacity : 9Gal/34L

Material: Non Toxic, High Density PE

Flushing time : ≥ 15 minutes



# PORTABLE EYEWASH STATION



## NON-PRESSURIZED SELF-CONTAINED EYEWASH

Tank: 550×550×650 mm, HDPE, UV & flame resistant

Volume: 80 L (Effective 40 L, 15+ min wash)

Eyewash Plate: 204×326×111 mm, HDPE

Spray Head: Nylon, >1.5 L/min flow

Water Supply: Silicone inlet pipe, leak-proof seal

Drain: 1/2" PVC pipe to sink/container

Sign: 185×200 mm, above unit

Operation Guide: 100×250 mm, left side

Maintenance Guide: 100×250 mm, right side

Orgcure: 500 ml, one bottle per water change



## PORTABLE SELF-CONTAINED EMERGENCY WASH STATION

15-gallon portable eyewash and drench hose unit features a SUS304 stainless steel pressurized tank with wheels, relief valve, air gauge, 10-gallon usable capacity, easy mobility, and ANSI Z358.1 2014 compliance.

Model : EEW-MA

Material : SUS304# stainless

Dimension : Ø350 X 750 (H) mm

Volume : 60 Liter (15Gallons) ,



## PORTABLE EYEWASH STATION T300

Mobile portable eyewash station with cart, self contained water supply, ABS dual-stream heads, wastewater collection basket, ANSI Z358.1 compliant, 7-day delivery.

Type : Portable

Standard : ANSI Z358.1-2014, OSHA 29, EN 15154, AS4775-2007

Capacity : 14Gal/53L

Material : SS Steel

Flushing time : ≥ 15 minutes



## PORTABLE EYEWASH STATION K300

Portable eyewash with cart, self contained water, ABS heads, wastewater barrel, ANSI Z358.1 compliant, 7-day supply.

Type : Portable in another word- moveable

Standard : ANSI Z358.1-2014, OSHA 29, EN 15154, AS4775-2007

Capacity : 14Gal/53L

Material : SS Steel

Flushing time : ≥ 15 minutes



# PRIVACY CURTAIN BOOTH SHOWER



## CURTAIN BOOTH TYPE EMERGENCY SHOWER & EYEWASH BD-550CB

Curtain Booth Emergency Shower & Eyewash ensures safe, immediate decontamination.

Compatible Shower & Eyewash: Model 550C

Sink Material: 304 Stainless Steel

Type: Circular Curtain with containment sink

Activation: Hand Push Plate and Foot Treadle

Standard: ANSI Z358.1-2014

Warranty: 12 Months from product supply against manufacturing defects



## CURTAIN BOOTH TYPE SHOWER & EYEWASH (SQUARE CURTAIN)

Combination showers offer quick access to both safety shower and eyewash, while the curtain ensures privacy and contains water within the area.

- 👉 Tubes made of SUS304# stainless steel
- 👉 Special anti-rust treatment applied
- 👉 Indication sign: PS material, 305x230mm
- 👉 Bilingual (Chinese & English) with graphic
- 👉 Meets ANSI, CNS, and DIN standards

All height: 2450 mm

Shower height: 2100 mm

Eyewash height: 1140 mm





# EMERGENCY EYEWASH AND SHOWER ROOM



## EMERGENCY EYEWASH AND SHOWER ROOM

Type: Combination Units

Standard: ANSI Z358.1-2014, OSHA 29, EN15154, AS4775-2007

Material: Stainless Steel 304

Eyewash Flow Rate:  $\geq 11.4\text{L/min}$

Shower Flow Rate:  $\geq 75.7\text{L/min}$

Flusing Time:  $\geq 15\text{ min}$

Inlet size: 1-1/4"

Minimum Ambient Temperature: 5°C/41°F

Maximum Ambient Temperature: 35°C/95°F





# TANK- EMERGENCY EYEWASH/SHOWER CABIN



## TANK-FED EMERGENCY SHOWER CABIN 1200L

Made of 304 SS: tank, eyewash shower, and eye/face wash (options: HDPE, SS316).

Cabin wall: 40mm SS frame without panels (options: GRP, SS304, SS316).

Shower head and eye wash bowl : 10" diameter

Shower flow : 75.5l/min

Eye wash flow : 11.4l/min

11.4l/min : 1 1/4" MNPT

Water outlet : 1 1/4" FNPT

Hydraulic pressure : 0.2mpa  
-0.6mpa

Door : No door (options: curtain, single or double door)



## RAPID RESPONSE DECONTAMINATION SHOWER BD-602

According to ANSI Z358.1-2014, water pressure should be maintained between 0.2-0.6 MPa; if it exceeds 0.6 MPa or gentler flow is required, a pressure relief valve should be installed.

External dimensions: W1000mm × D900mm × H2400mm

Shower Head: 10" SS304 SH

Eye wash nozzle: green ABS spray, others are SS304 with 10" waste

water recycle bowl Valve: Shower valve 1" SS304 ball valve

Eye wash valve 1/2" SS304 ball valve Supply: 1 1/4" MNPT

Waste: 1 1/4" FNPT



## RAPID RESPONSE DECONTAMINATION SHOWER BD-602B

The tank is manufactured from 304 stainless steel with a thermal insulation layer and GRP cover. Eyewash shower, eye/face wash, and cabin frame are 304 stainless steel, while the cabin wall is GRP.

External dimensions: W1000mm × D900mm × H2400mm

Shower Head: 10" SS304 SH

Eye wash nozzle: green ABS spray, others are SS304 with 10" waste

water recycle bowl Valve: Shower valve 1" SS304 ball valve

Eye wash valve 1/2" SS304 ball valve Supply: 1 1/4" MNPT

Waste: 1 1/4" FNPT



## DECK MOUNTED HOSE



### DECK MOUNTED PULL-OUT EYE WASH STATION WITH 1.5M HOSE – SINGLE HEAD EMERGENCY EYEWASH C250

Body & Valve: Chrome-plated brass, 304 SS handle, hands-free clip.

Sprayer: Single head with dust cover.

Hose: 1.5 m.

Pressure/Supply: 0.2–0.8 MPa, 1/2" IPS/NPT, clean/leached water.

Package: 37 × 23 × 11 cm carton.



### DECK MOUNTED PULL-OUT EYE WASH STATION WITH 1.5M HOSE – SINGLE HEAD EMERGENCY EYEWASH C200

Body & Valve: Chrome-plated brass, 304 SS handle, replaceable seat, hands-free clip.

Sprayer: Single head with rubber dust cover.

Hose: 1.5 m flexible hose.

Pressure/Supply: 0.2–0.8 MPa, 1/2" IPS/NPT, clean/leached water.

Package: Carton size 37 × 23 × 11 cm.



### DECK MOUNTED PULL-OUT EYE WASH STATION WITH 1.5M HOSE – SINGLE HEAD EMERGENCY EYEWASH C150

Body & Valve: Chrome-plated brass, 304 SS handle, hands-free clip.

Sprayer: Single head with dust cover.

Hose: 1.5 m.

Pressure/Supply: 0.2–0.8 MPa, 1/2" IPS/NPT, clean/leached water.

Package: 37 × 23 × 11 cm carton.



### DECK MOUNTED PULL-OUT EYE WASH STATION WITH 1.5M HOSE – SINGLE HEAD EMERGENCY EYEWASH C100

Body & Valve: Chrome-plated brass, 304 SS handle, replaceable seat, hands-free clip.

Sprayer: Single head with rubber dust cover.

Hose: 1.5 m flexible hose.

Pressure/Supply: 0.2–0.8 MPa, 1/2" IPS/NPT, clean/leached water.

Package: Carton size 37 × 23 × 11 cm.



# DECK MOUNTED EYEWASH



## DECK MOUNTED EYE WASH STATION SS-A300

Body: Solid brass, electroplated, corrosion & heat resistant

Sprayer: Soft bubble water

Dust Cover: Auto-open

Valve: Quick response, 500,000 cycles

Pressure: 0.2–0.8 MPa

Flow: 12 L/min

Flexible: 360° swivel



## DECK MOUNTED EYE WASH STATION SS-A350

Pipe Material: Stainless Steel 304

Valve: 1/2" SS 304 ball valve

Water Supply: 1/2" IPS/NPT connection

Working Pressure: 0.2–0.8 MPa

Flow Rate: 12 L/min

Water Source: Clean or filtered water

Activation: Operated by flag handle

Packaging: Carton size 30×27×14 cm

### DECK MOUNTED EYEWASHES, STAINLESS STEEL WITH EPOXY COATING



The Esnico deck-mounted eyewash features stainless steel nozzles with filters, delivering gentle aerated streams to rinse eyes and flush harmful substances quickly. Built with corrosion-resistant epoxy coating, it meets ANSI Z358.1-2014 and OSHA 29 CFR 1910.151 safety standards.

Type: Deck-mounted

Standards: ANSI Z358.1-2014, OSHA 29, EN15154, AS4775-2007

Material: Stainless Steel 304

Flow Rate: ≥11.4 L/min

Flushing Time: ≥15 minutes

Inlet Size: 1/2"

Operating Pressure: 2–6 bar (29–87 PSI)

Ambient Temperature Range: 5–35°C (41–95°F)

### DECK MOUNTED EYEWASHES, STAINLESS STEEL, HIGH CONFIGURATION



### DECK MOUNTED EYEWASHES, STAINLESS STEEL



### DECK MOUNTED EYEWASHES, STAINLESS STEEL, STANDARD





# STAINLESS STEEL PEDESTAL EYEWASH



## FAUCET MOUNTED EYEWASH G150

Faucet Mounted Eye Washer easily converts almost any faucet into an efficient emergency eyewash station without affecting normal faucet use. Simple to install and quick to activate, it includes three adaptors to fit most faucets, including laboratory types. Constructed from durable chrome plated forged brass for long lasting performance. Carton size: 23×12×8 cm.



## FAUCET MOUNTED EYEWASH G100

The Faucet Mounted Eye Washer easily converts any faucet into an emergency eyewash station without disrupting normal use. It installs quickly with three adaptors for universal fit and features a durable chrome plated forged brass body. Carton size: 23 × 12 × 8 cm.



## SHOWER TEST KIT H-STK

ANSI standards require drench showers to be tested weekly, often leaving floors wet. In emergencies, remain under the shower for at least 15 minutes to flush hazardous chemicals, ensuring essential first aid until medical help arrives.

### KEY FEATURES:

- 👍 20 L bucket with lid for shower testing
- 👍 Used with Shower Test Sock
- 👍 Rope buckle + nylon strap for secure fit
- 👍 Complies with ANSI Z358.1





# NATURAL SAW DUST



## NATURAL SAW DUST

Natural Sawdust is a fine, biodegradable by product of woodworking and forestry, known for its lightweight and absorbent nature. Widely used in industrial and agricultural sectors, it supports sustainability, aids in waste management, and serves practical uses from livestock care to environmental protection.

### KEY FEATURES:

- ✔ Oil and moisture absorption
- ✔ Animal bedding
- ✔ Soil erosion control
- ✔ Soil amendment
- ✔ Lightweight handling
- ✔ Cost-effective material
- ✔ Eco-friendly solution







## FLOOD SAX

FloodSax are lightweight, self inflating sandless sandbags that provide quick and effective flood protection and water control.

FLOOD SAX- SELF INFLATABLE BAG	1
PVC self-rising flood barrier	2
SG60 SERIES (60cm height)	3



# FLOOD SAX- SELF INFLATABLE BAG



Remove Outer Packaging



Add Liquid to Activate



Build Flood Barrier

## OSS SELF-INFLATED BAG

The OSS Self-Inflated Bag is a compact, ready-to-use emergency solution for managing liquid spills. It automatically inflates upon contact with oil, chemicals, or other hazardous liquids, creating an instant barrier to contain leaks. Lightweight and maintenance-free, it's ideal for rapid response situations. Designed to enhance workplace safety and environmental protection, this innovative containment bag offers reliable, hassle-free performance in spill control operations.





# PVC SELF-RISING FLOOD BARRIER



## QUICK DAM WATER GATE

MOQ: 1pc

Temperature range: -30℃~ +70℃

Warranty: 2years



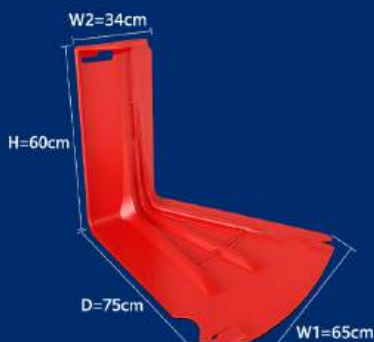
## QUICK DAM WATER GATE

Material: PVC coated tarpaulin + galvanized plate

Fabric Thickness: 0.6mm

Temperature Resistant: -30℃~+70℃

## FLOOD BARRIER SG60(60CM HEIGHT)



### FLOOD BARRIER OUTWARD

Sguard Flood Barrier dams block rising water from rivers, lakes, and oceans using strong materials. Garage flood panels protect homes by preventing water entry through garage doors.



### FLOOD BARRIER INWARD

Sguard creates flood solutions including box walls, self inflating sandbags, and aluminum barriers, protecting tunnels, subways, and homes in 54 countries with 10+ years' experience.



### FLOOD BARRIER STRAIGHT

Sguard flood barriers are lightweight, quick to deploy, space-saving, reusable for 20 years, and eco-friendly unlike sandbags that are heavy, slow, single use, and polluting.



# HDPE JERRY CAN



## JERRY CAN 25L

Durable 25L Jerry Can for safe storage and transport of fuel or liquids, with secure cap, ergonomic handle, and leak resistant, rugged construction.

LENGTH : 312-316mm

WIDTH : 247-251mm

HEIGHT : 408-412mm

COLOUR : White

WEIGHT : 0.9kg

SUMP : 25ltr

BODY WEIGHT : 1380+15g





# SHARPS CONTAINER



## SHARPS CONTAINER 2L

The 2L Sharps Container ensures safe, secure, and leak-proof disposal of medical sharps, ideal for both home healthcare and clinical environments.

Model : DMS-S2

Product Size : 13X12X25.5CM

Packing Qty : 40PCS/Carton

Carton Size : 46X33X46cm



## SHARP SAFETY BOX 7L

It provides safe, leak proof disposal of medical sharps, featuring a secure locking lid and user friendly design for healthcare or home use.

Model : DMS-F07

Product Size : 25X20X23CM

Packing Qty : 24PCS/Carton

Carton Size : 51X42X37cm



## SHARPS BIN CONTAINER 23L

23L Sharps Container ensures safe, leak proof disposal of medical waste with secure, high-capacity design.

Model : DMS-F23

Product Size : 37×24X38CM

Packing Qty : 20PCS/Carton

Carton Size : 49X39X65cm





# ISO CONTAINERS



## ISO CONTAINER

Custom 10FT and 20FT ISO Containers provide secure, weather-resistant storage for oil booms and spill response gear. Durable, mobile, and customizable, they ensure fast deployment and global transport compatibility.

### KEY FEATURES:

- ✔ Weather-Resistant Protection
- ✔ Secure & Lockable Storage
- ✔ Customizable Interior
- ✔ Easy Transport & Deployment
- ✔ International Standard Sizes
- ✔ Space-Saving Design
- ✔ Ideal for Spill Response







## BIOHAZARD BAGS & BINS

Biohazard Bags & Bins provide safe, compliant containment and disposal of infectious waste. Durable, clearly marked, and ideal for hospitals, labs, and medical facilities.

BIO HAZARD BAGS  
BIOHAZARD BINS

14  
2



# BIO HAZARD BAGS



## BIOHAZARD KANGAROO ZIP LOCK BAG

Size: 6.5" x 7.7" x 0.05mm

Packing: 100 pcs/pack



## BIOHAZARD BAG 50 X 52"

Biohazard bags with safety symbols.

Packing 100's / Pack



## BIOHAZARD BAG 36 X 48"

Puncture-resistant biohazard symbol bags.

Packing 100's / Pack



## BIOHAZARD BAG 34 X 36"

Biohazard symbol, puncture resistant, flat bottom, safety marked.

Packing 100's / Pack



## BIOHAZARD BAG 25 X 36"

Biohazard symbol, puncture resistant, flat bottom, safety marked.

Packing 100's / Pack



## BIOHAZARD BAG 23 X 27"

Biohazard bags with safety symbols.

Packing 100's / Pack



## BIOHAZARD BAG 20 X 24"

Biohazard symbol, sealed, puncture resistant.

Packing 100's / Pack



## BIOHAZARD BAG 18 X 18"

Biohazard marked, sealed, puncture resistant.

Packing 100's / Pack



# BIO HAZARD BAGS



## **BIOHAZARD BAG 10 X 12"**

Puncture-resistant biohazard bags, flat sealed, symbol marked for safety.

Packing 100's / Pack



## **BIOHAZARD BAG 08 X 13"**

Biohazard bags, puncture resistant, flat sealed, safety symbol marked.

Packing 100's / Pack



## **AUTOCLAVE BIOHAZARD BAGS 25 X 36"**

Packing 100's / Pack



## **AUTOCLAVE BIOHAZARD BAGS 20" X 24"**

Packing 100's / Pack



## **AUTOCLAVE BIOHAZARD BAGS 19" X 20"**

Packing 100's / Pack



## **AUTOCLAVE BIOHAZARD BAGS SIZE-08" X 13"**

Packing 100's / Pack

Autoclave biohazard bags for safe, compliant disposal in medical, lab settings.





# BIOHAZARD BINS



## BIOHAZARD BIN 120L

Manufactured to European Standard EN840, ensuring high durability and resistance to all weather conditions.

Capacity 120 L (31.7 gal)



## BIOHAZARD BIN 240L

Manufactured as per European Standard EN840. Weather-resistant and built for high durability.

Capacity 240 L (63.4 gal)



# EAGLE OVERPACK DRUM



## EAGLE OVERPACKS 1661

The Eagle 1661 65-Gallon Overpack Poly Drum is made from yellow blow-molded high-density polyethylene (HDPE) with UV inhibitors. It is lightweight, durable, and resistant to chemicals and weather, featuring a secure yellow screw-on lid.

Ideal for storing, handling, and transporting hazardous materials, spill containment, cleanup, and bio waste disposal. Use as overpack for non leaking containers; if leaking, add sorbents no free liquids.



## EAGLE OVERPACK 1690

Durable, lightweight HDPE drum with UV protection and screw on lid. Resistant to weather and chemicals.

### KEY FEATURES:

- ✚ Stores hazardous materials
- ✚ Easy transport
- ✚ Spill containment
- ✚ Bio waste disposal
- ✚ For incineration





## PPE & CLEAN-UP EQUIPMENT

Essential PPE and clean-up equipment for safe handling of hazardous materials and spill response. Ensures worker protection and effective contamination control in any environment.

EYE PROTECTION	1
HAND PROTECTION	3
PROTECTIVE CLOTHING	2
WASTE CLEAN UP EQUIPMENT	3



# PPE & CLEAN-UP EQUIPMENT

## EYE PROTECTION



### EVO V130 CLEAR PC/AF GOGGLE

Classic safety goggles with indirect ventilation, anti-fog coating, and EN166 certification for impact, splash, and mask compatibility.

## HAND PROTECTION



### NITRILE RUBBER GLOVE

Abrasion resistant nitrile glove with grip, ideal for chemical handling.



### DISPOSABLE NITRILE POWDERED FREE GLOVES BLUE

ASSURE nitrile gloves, latex free, AQL 1.5, exam ready, 100/box.



### RED CHEMICAL GLOVE,, FREE SIZE

Cotton lined PVC gloves, chemical and liquid resistant.

## PROTECTIVE CLOTHING



### HEAVY DUTY PVC APRON YELLOW ONE SIZE FITS MOST

100% waterproof, puncture resistant apron offers extended coverage and splash protection from most mild chemicals, caustics, and acids. Order ID: C-Apron.

## WASTE CLEAN UP EQUIPMENT



### HARD BLACK BRISTLES ROAD SWEEPING BRUSH BROOM

Wooden handle road broom.



### SPARK PROOF GREEN SCOOP

One-piece plastic scoop for hygienic use. SP Scoop.



### SPARK PROOF GREEN SHOVEL

Non sparking green shovel, 1m long. SP Shovel.



### REVOGARD B056 TYPE 5/6 DISPOSABLE COVERALL

63 +/- 2g microporous suit with elastic hood, cuffs, ankles, thumb loops, and flap-covered zipper offers protection from particulates and light splashes.





## Safeguarding Industry & Environment Together

At Ocean Safety Supplies Pte Ltd, we deliver reliable safety and environmental solutions. With a strong APAC presence and a fully stocked Singapore warehouse, we keep industries protected, compliant, and prepared.

- 15+ years of industry expertise
- 10,000 sq. ft. warehouse
- Comprehensive product range
- Compliance-focused solutions
- Proven reliability
- Cost-effective & durable products
- Customer-first approach
- Commitment to sustainability

With Ocean Safety Supplies, you don't just buy products, you gain a partner in safety and compliance. Together, let's build a safer, sustainable future.

## Why Choose Us?

Dedicated to safety at every step, delivering reliable, compliant solutions that protect people, the environment, and operations with the highest quality standards.

- ✦ Safety First
- ✦ Uncompromised Quality
- ✦ Global Compliance
- ✦ Integrity & Trust
- ✦ Customer Commitment

## Our Promise to You



FREE  
CONSULTATION  
AND SUPPORT



SIMPLE  
HASSLE FREE  
ORDERING



COMPLIANT  
AND GLOBAL  
STANDARDS



RELIABLE AND  
COST EFFECTIVE  
PRODUCTS



SAFETY  
WITHOUT  
COMPROMISE



GUARANTEE ON  
QUALITY AND  
INTEGRITY





**OCEAN SAFETY SUPPLIES**  
Spill Control & Containment Solution

## Let's Talk

Reach out for a custom quote or to discuss the right solution for your business.



1 Bukit Batok Cres, #08-60 WCEGA  
Plaza Singapore 658064



+65 67470490  
+65 90083897



info@oceansafety supplies.com  
hari@oceansafety supplies.com



www.oceansafety supplies.com

*Delivering Safety. Protecting Futures.*

